

NLND
BERLIN

EVENT LOCATIONS

NLND.COM | NEUKÖLLNISCHE ALLEE 80 | 12057 BERLIN





150.000 m²
with 30 specialised
buildings

Startup ecosystem
+ international
partner network

High-value curated
community

Innovation
programming
and events

THE HOME OF INDUSTRIAL TRANSFORMATION

NLND (Neuland) Berlin is a 150.000 sqm former cigarette factory in Neukölln reimaged as the home of industrial transformation. We bring together industry and SMEs with universities, startups and government to create a European lighthouse project for deeptech innovation and future city technology.

FEATURES

- A variety of event spaces enable conferences with flexible stage setups, presentations, trade fairs, or meetings.
- The halls in building A2 impress with their expansive and adaptable layout. Covering approx. 11,000 sqm, this will become the campus' new conference center.



Urban Sports Park (out-

Mixed Purpose

Urban Sports Park (indoor)

Hydrogen & Electric Charging Station

Market-place

Creative Industry

Conference Centre

Makers Lab

Bar & Restaurant

Startup Lab & Production

Prototyping Hall

Innovation Hub

Neucafé

Coffee Bar

Offices & Startups



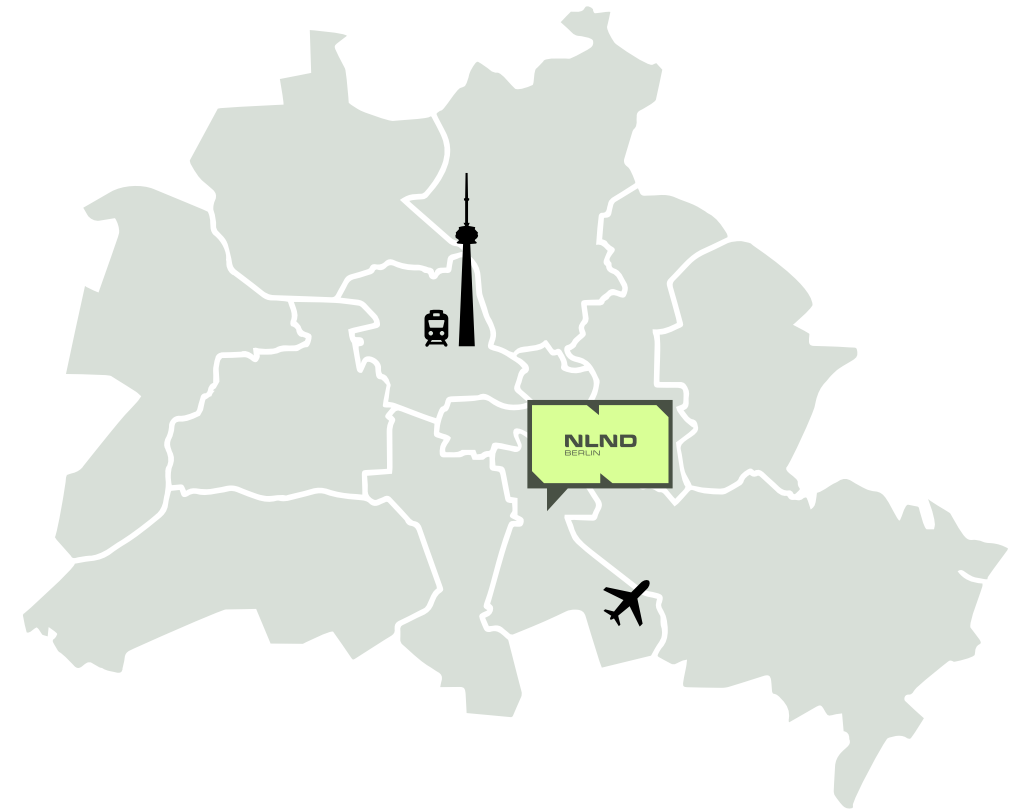
NLND CAMPUS

NLND Berlin is a **vibrant space in the heart of Neukölln** where community, innovation, culture, sustainability, and creative education intersect.

With its **variety of work, production, and event spaces, creative and community areas**, the campus creates an inspiring atmosphere. It brings together curious and inventive people to share ideas, learn from one another, and grow together.

DISTANCES

- S Köllnische Heide: 1 km → 6 min walk
- Estrel Berlin: 1 km → 5–16 min by car/train
- Alexanderplatz: 9 km → 25 min by car/train
- Hauptbahnhof: 11 km → 20–30 min by car/train
- Flughafen BER: 18 km → 15–30 min by car/train
- Autobahn A100: 0,6 km → 2 min by car



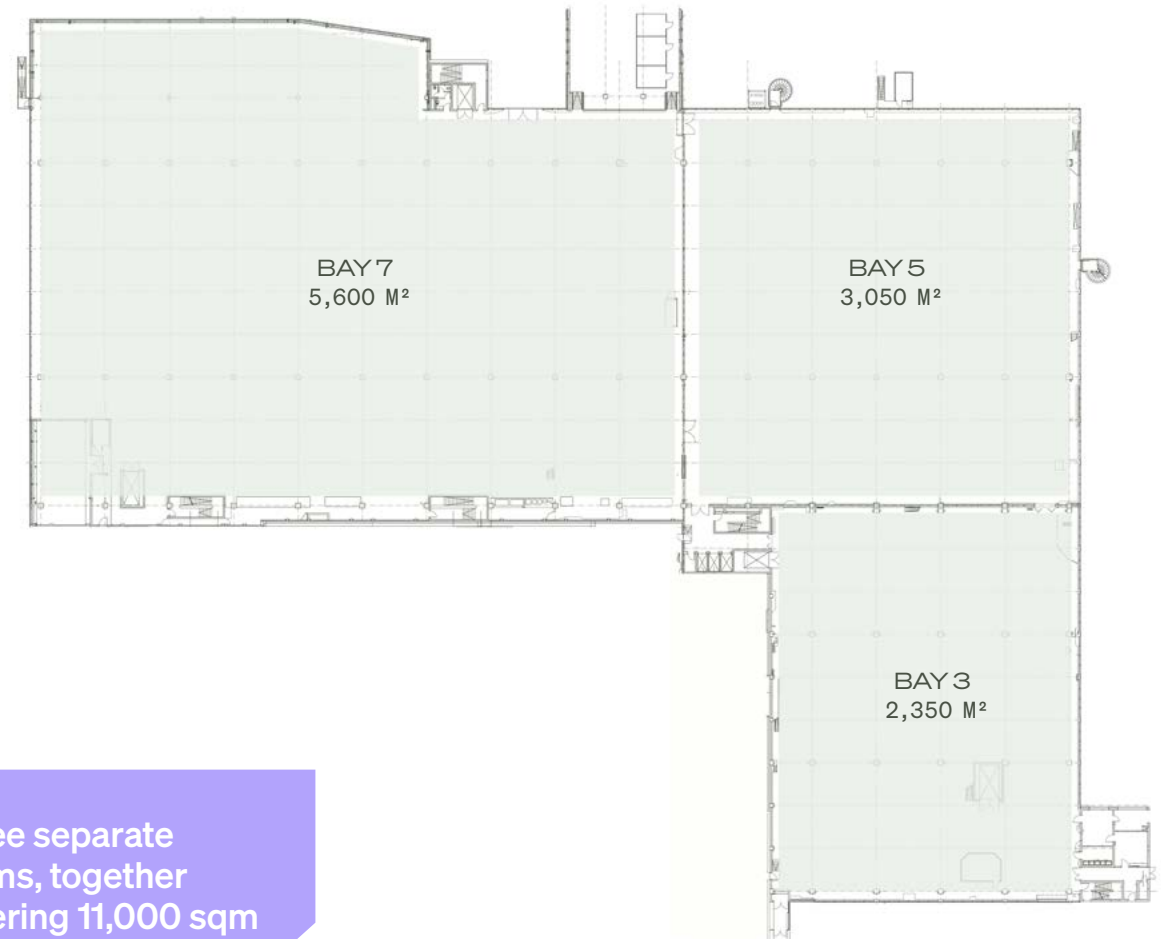
LOCATION FEATURES

- Ceiling height approx. 6 m
- Sanitary facilities and high-voltage power
- Flexible layout possibilities
- Natural light
- Individual or separate hall rental possible
- Freight elevators available
- 3 loading docks for loading and unloading

Bay 7 Inclusive Tech setup:

- LED wall (22 × 4.5 m)
- Room separation system (molton track)
- Ambient lighting (72 × AT10 lamps)
- Projection beamer
- PA system

CONTACT US FOR A VIEWING
OR PRICE ESTIMATE EVENT@GCD.BERLIN



Three separate
rooms, together
covering 11,000 sqm

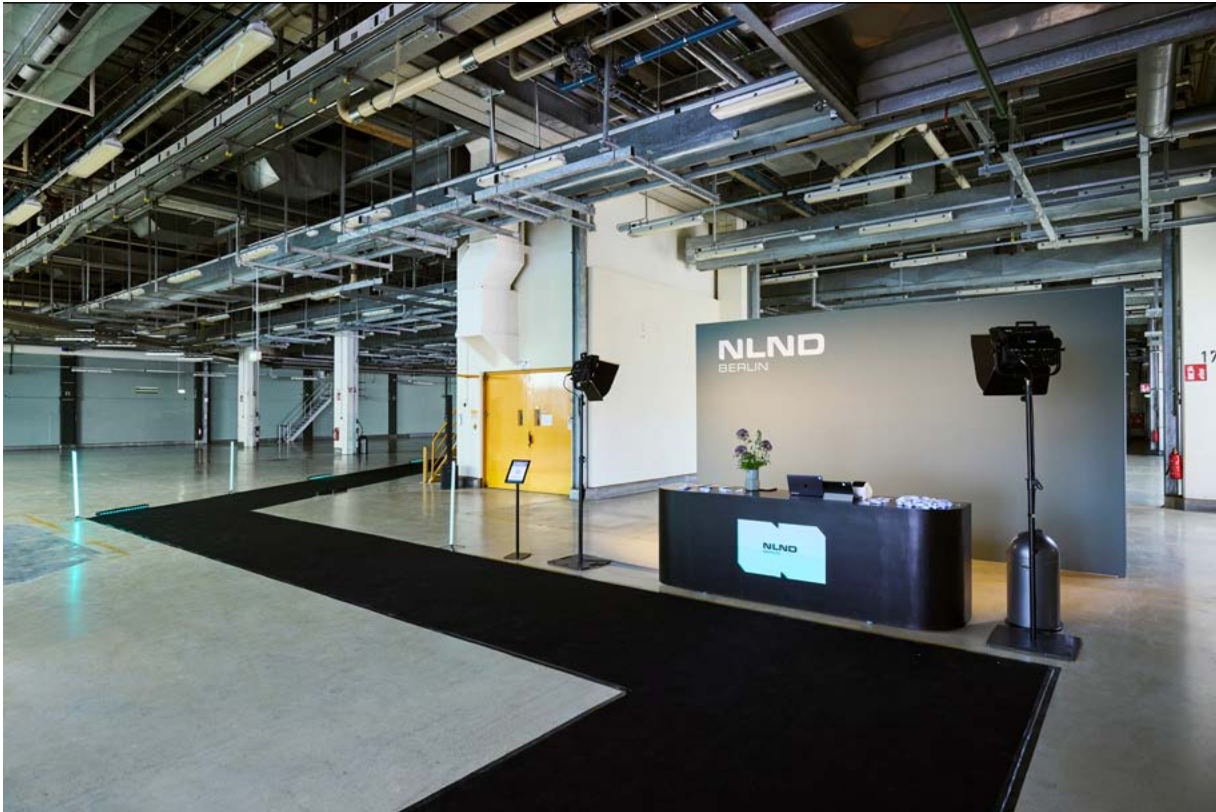
A2

BAY 3



BAY 3, 2,350 M²

BAY 3: BACK OF HOUSE / WARDROBE / ACCREDITATION







A2

BAY 5



BAY 5, 3,050 M²

BAY 5	~SQM				
		Parliament	Rows	Gala	Banquet
	3,050	448	1,372	800	1,296



A2

BAY 7



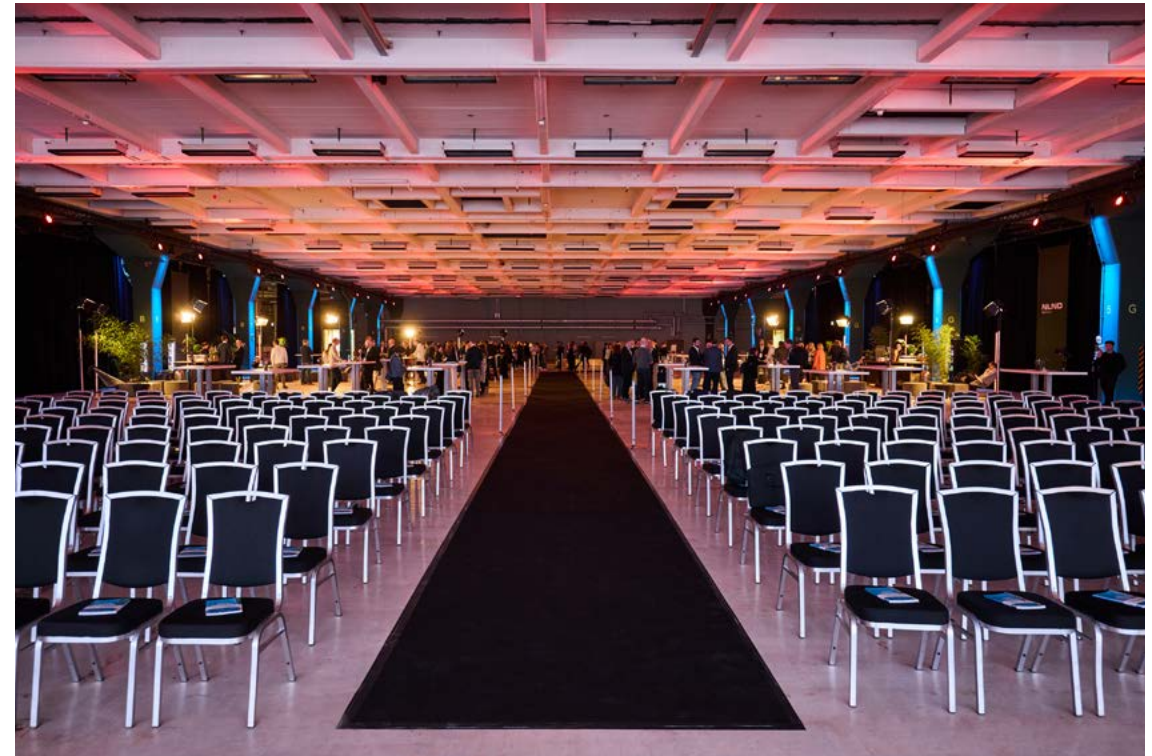
BAY 7, 5,600 SQM



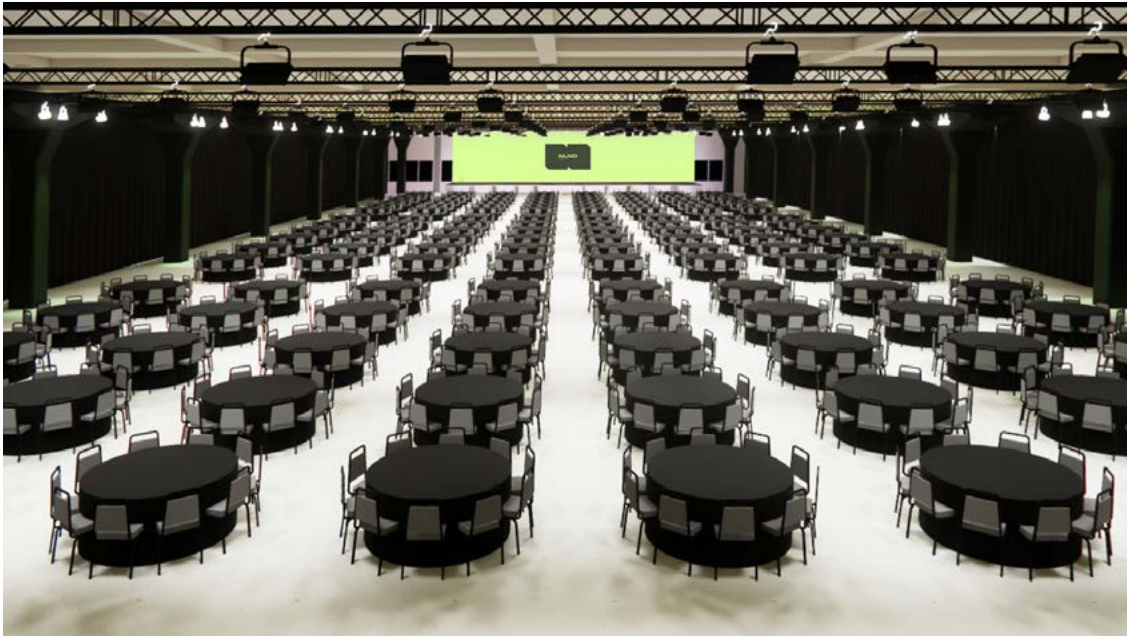
LED-WALL (22 x 4.5 M)



		⌘	⌘	⌘	⌘
BAY 7	~SQM	Parliament	Reihen	Gala	Banquet
	5,650	690	2,254	1,360	1,878



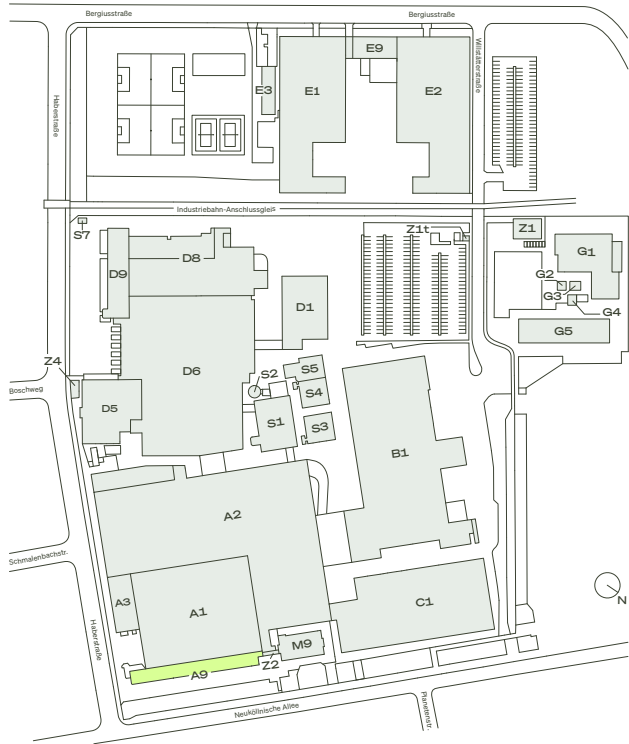
GALA SEATING



CONTACT US FOR A VIEWING OR PRICE ESTIMATE
EVENT@GCD.BERLIN

A9

CINEMA



CAMPUS MAP

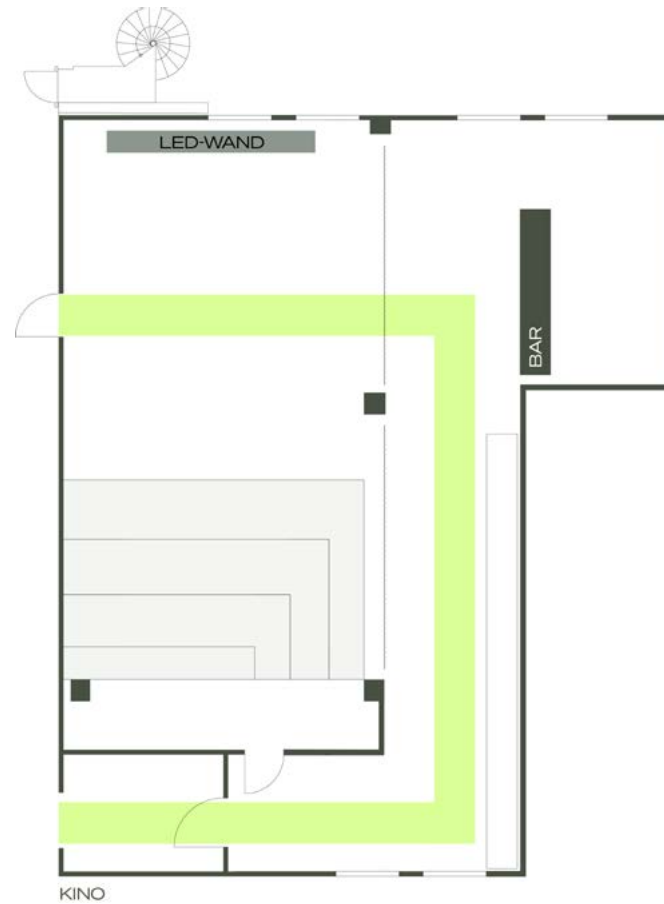




LED-WALL (4,5 x 2,5 M)

CINEMA		☰	☰ ...
	~ SQM	Grandstand	Mix
	140	40	80





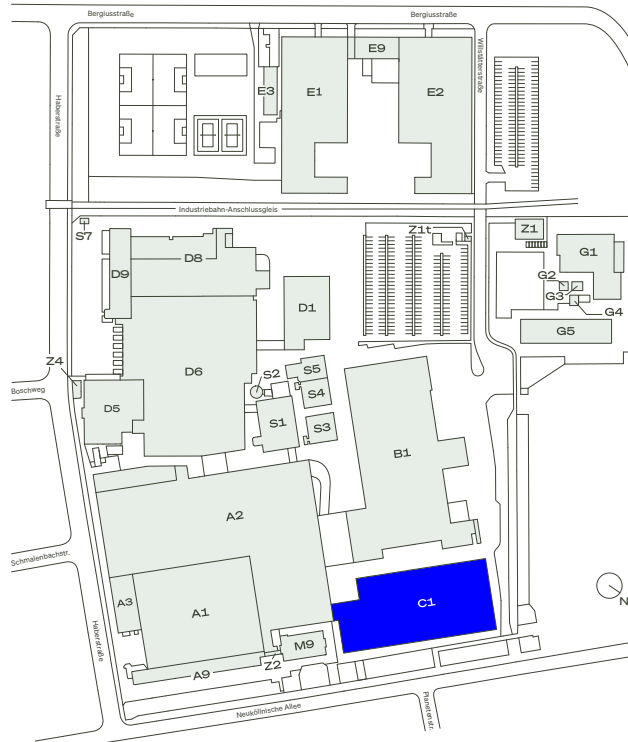
LOCATION FEATURES

- Approx. 140 sqm
- LED Wall (4,5 × 2,5m)
- 4 handheld microphones and PA-System (Plug & Play)
- Modern interior design
- Furniture included
- Various seating arrangements possible
- Daylight

CONTACT US FOR A VIEWING OR
PRICE ESTIMATE EVENT@GCD.BERLIN

C1

SHOWCASE STAGE





CAMPUS MAP





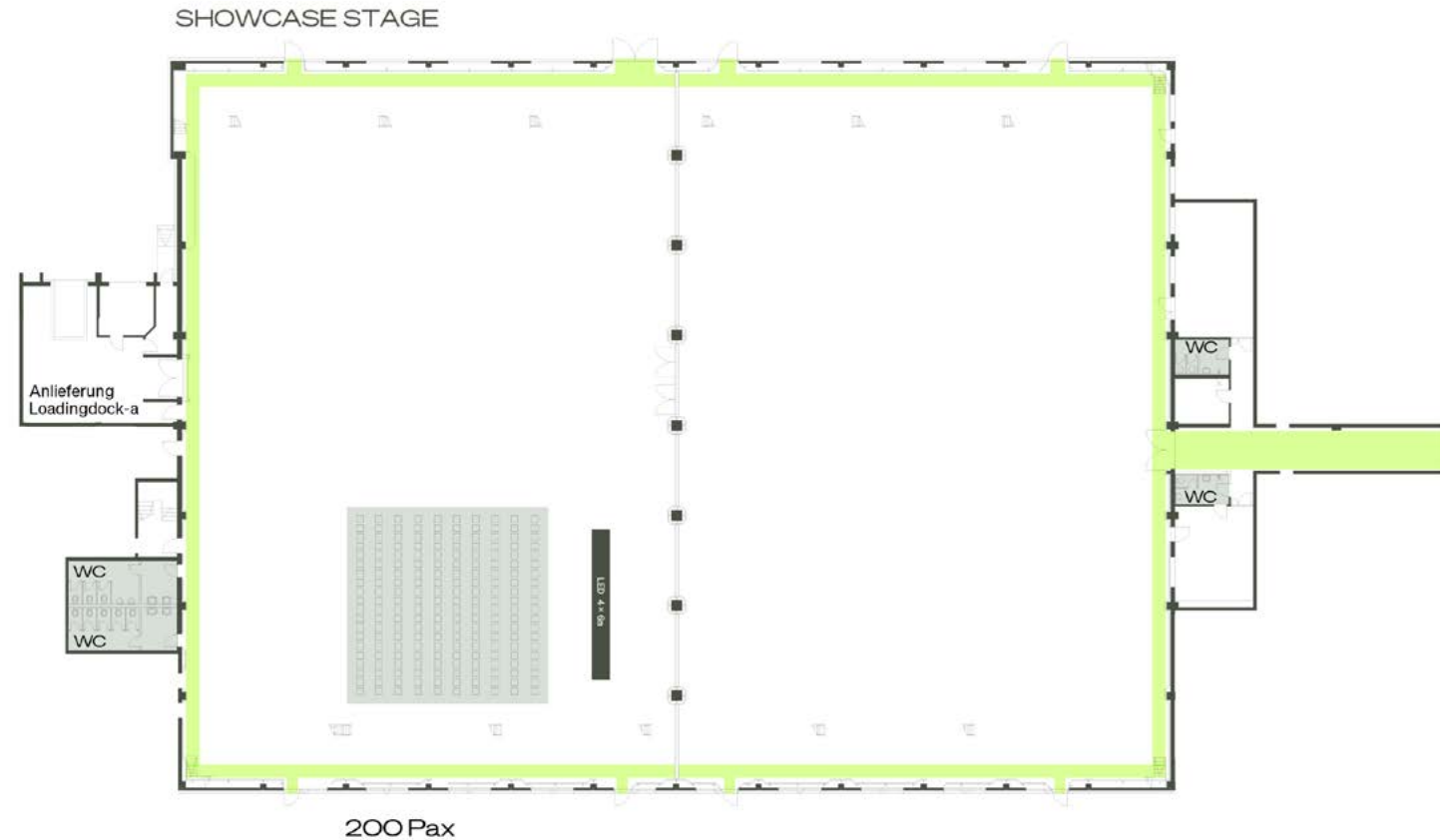
LED-WALL (4×6 M)



AUDITORIUM	~ SQM	 Grandstand	 Mix
	775	200	300

LOCATION FEATURES

- Approx. 775 sqm
- Natural daylight from floor-to-ceiling windows on both sides
- Tiered seating with seat cushions included
- LED wall (4 × 6 m)
- Modern interior design
- Ground-level access directly via Neuköllnische Allee
- Smaller adjacent rooms (offices, storage space, meeting rooms)
- High-voltage power supply available



CONTACT US FOR A VIEWING OR PRICE ESTIMATE
EVENT@GCD.BERLIN

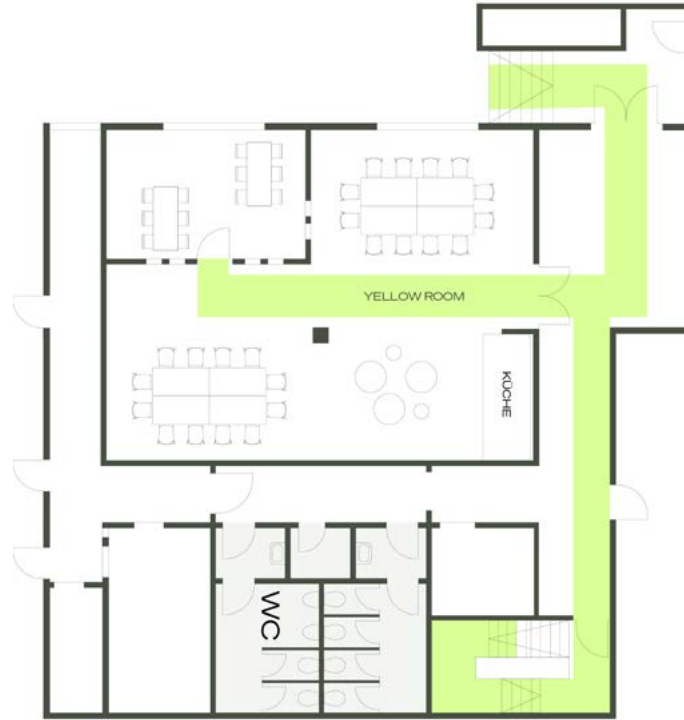
C1

YELLOW ROOM

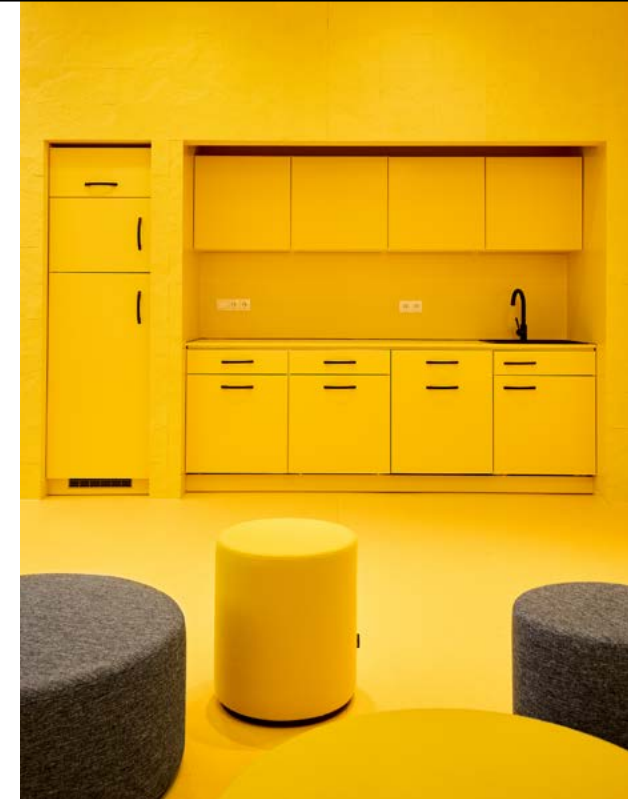
LOCATION FEATURES

- Approx. 120 sqm
- Up to 80 people
- Various seating arrangements possible
- Kitchenette available
- Mobile furniture available
- Modern interior design
- Daylight
- TV/screen
- Separate room





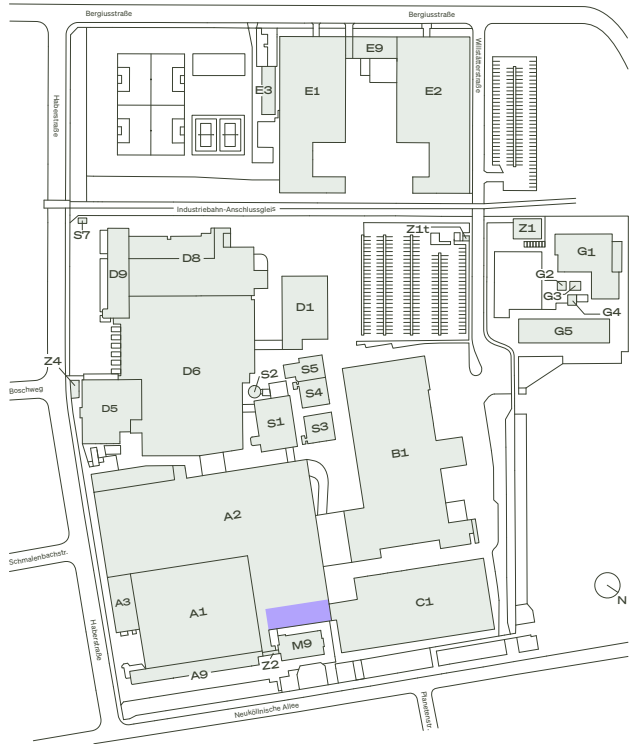
C1 Yellow Room			
	~SQM	Rows	Mixed
	120	60	42



CONTACT US FOR A VIEWING OR PRICE ESTIMATE:
EVENT@GCD.BERLIN



A2

CANTEEN



CAMPUS MAP



CANTEEN	~ QM	 Rows	 Banquet
	525	160	250



LOCATION FEATURES

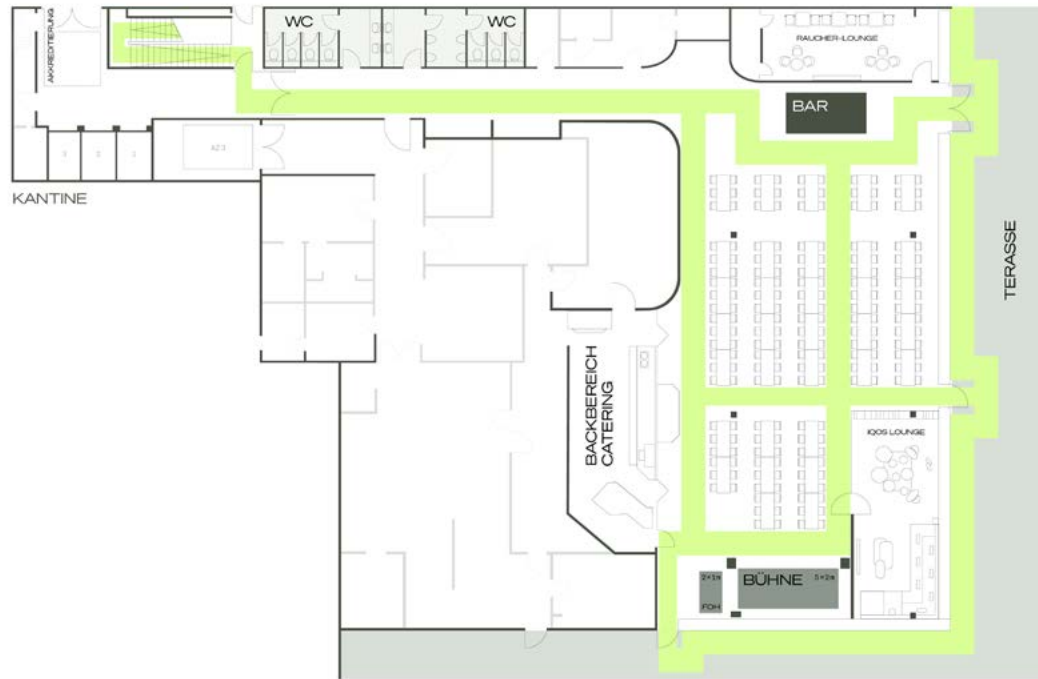
- Natural daylight through floor-to-ceiling windows
- Rooftop terrace with furniture included
- Separate rooms
- Various seating arrangements available
- Direct access to the rooftop terrace with views over the campus
- High-voltage power supply available



CONTACT US FOR A VIEWING OR PRICE ESTIMATE:
EVENT@GCD.BERLIN

HIGH TABLES WITH SEATING

SEATING IN ROWS



252 Pax

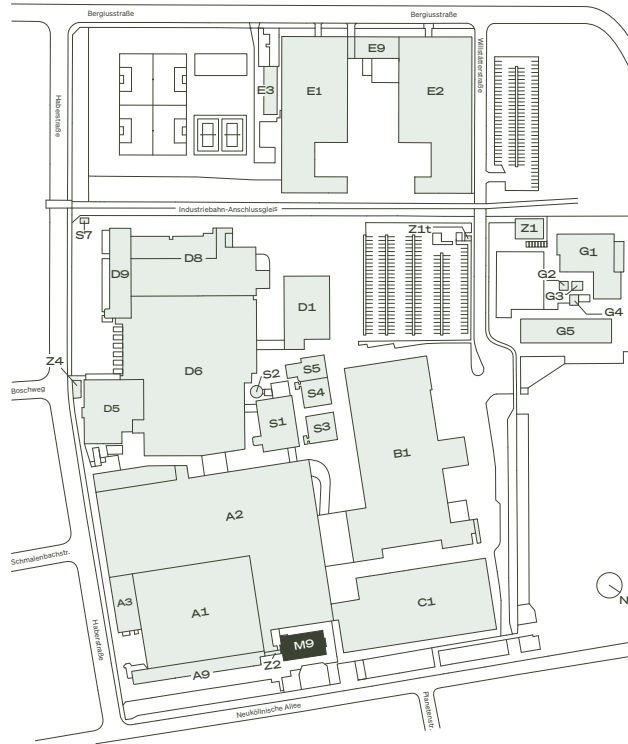


162 Pax

CONTACT US FOR A VIEWING OR PRICE ESTIMATE: EVENT@GCD.BERLIN

M9

CONFERENCE ROOMS



CAMPUS MAP





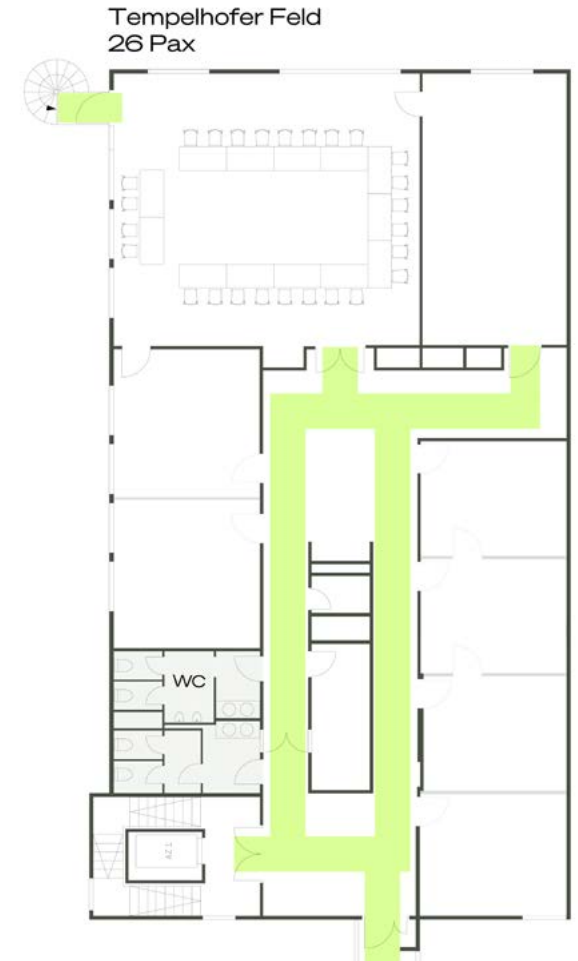
CONFERENCE ROOM
TEMPELHOFFER FELD

- Approx. 95 sqm
- Up to 50 people
- Alternative seating options
- Furniture included

ROOM FEATURES

- Projector / Screen
- Virtual meeting setup
- TV / Screen
- Microphone
- Moderation box, pens + paper
- WiFi

M9 TEMPELHOFFER FELD			
	~SQM	Rows	U-Form
	95	50	26



DROP US AN EMAIL FOR PRICING AND AVAILABILITY:
EVENT@GCD.BERLIN

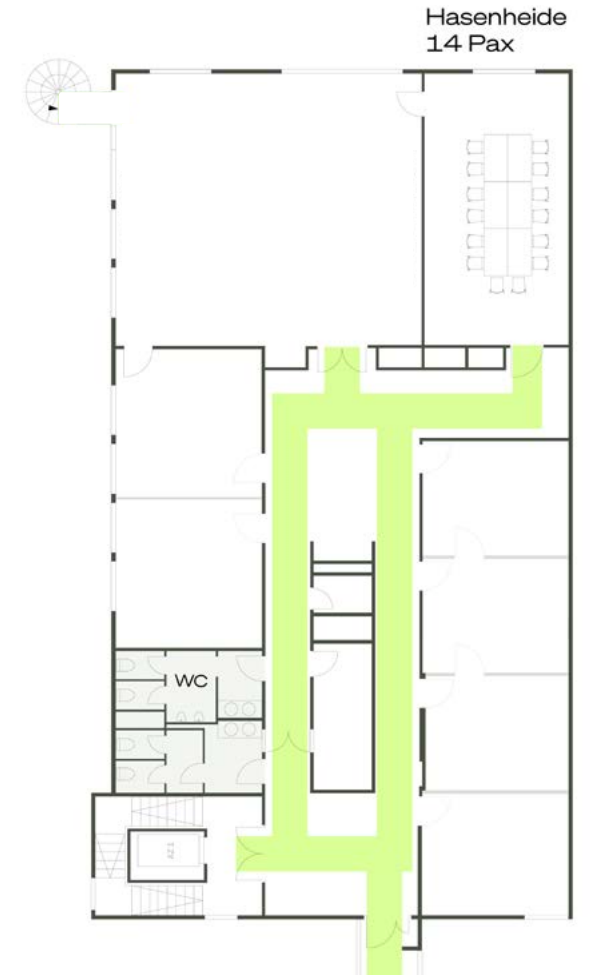
CONFERENCE ROOM
HASENHEIDE

- Approx. 45 sqm
- Up to 30 people
- Alternative seating options
- Furniture included

ROOM FEATURES



- Projector / Screen
- Virtual meeting setup
- TV / Screen
- Microphone
- Moderation box, pens + paper
- WiFi

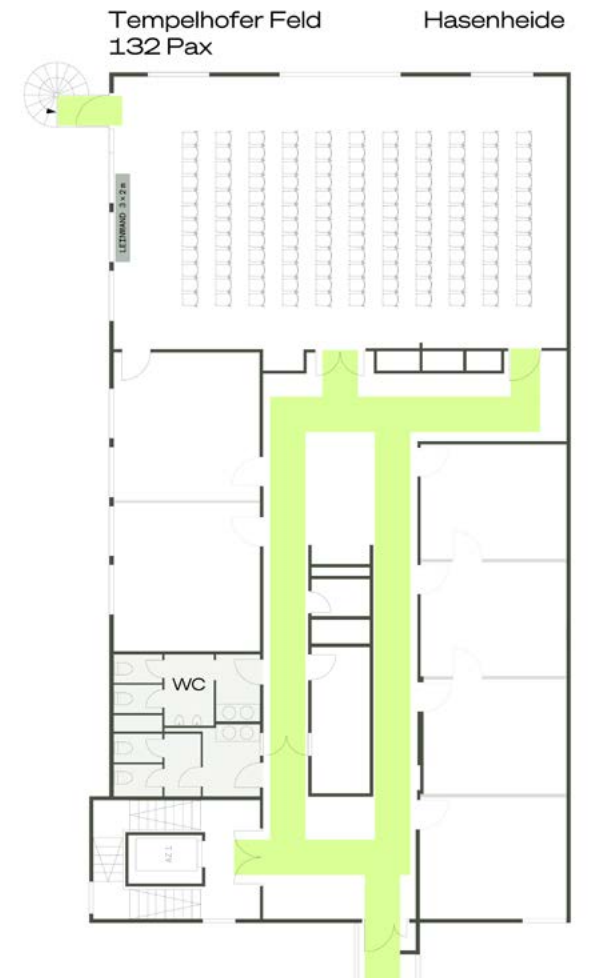
M9 HASENHEIDE	~SQM	Rows	Block
	45	30	14



DROP US AN EMAIL FOR PRICING AND AVAILABILITY:
EVENT@GCD.BERLIN



COMBINED	~SQM	 Rows	 U-Form
	140	132	45



DROP US AN EMAIL FOR PRICING AND AVAILABILITY:
EVENT@GCD.BERLIN



GET IN TOUCH TO EXPLORE THE SITE AND BRING
YOUR EVENT TO LIFE AT NLND.

event@gcd.berlin

+49 (0)30 92 10 73 67